

TABLE 1: BE-8XXC(NPL) CAMERA ONLY OPTIONS

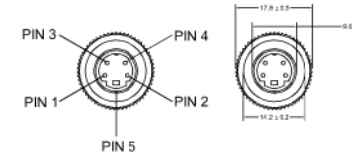
PART NO.	MODEL NO.	DESCRIPTION	FIRMWARE VER.
5977	BE-800C-C(NPL)	CAMERA, ELITE, HEATED, ULTRA-LOW-LIGHT, PAL, CAMERA ONLY, NO BRANDING	MA-A10CP_XXX_MP_REV11(190522)
5979	BE-850C-C(NPL)	CAMERA, ELITE, HEATED, ULTRA-LOW-LIGHT, PAL, 12-24VDC, CAMERA ONLY, NO BRANDING	MA-A10CP_XXX_MP_REV11(190522)
5767	BE-850C-C(78)(NPL)	CAMERA, ELITE, HEATED, ULTRA-LOW-LIGHT, PAL, 78°, 12-24VDC, CAMERA ONLY, NIO BRANDING	MA-A10CN_WDRON_MP_RE/1.1(190522)

CHANGES FROM BASE PRODUCT BE-8XXC-C TO BE-8XXC-C(NPL)

- CHANGE: 1. BE-8XXC PD-LBL REPLACED WITH BE-8XXC-C(NPL) PD-LBL.  
 2. BRIGADE SILKSCREEN REMOVED.
- OPERATION: 1. SAME AS BASE PRODUCT.

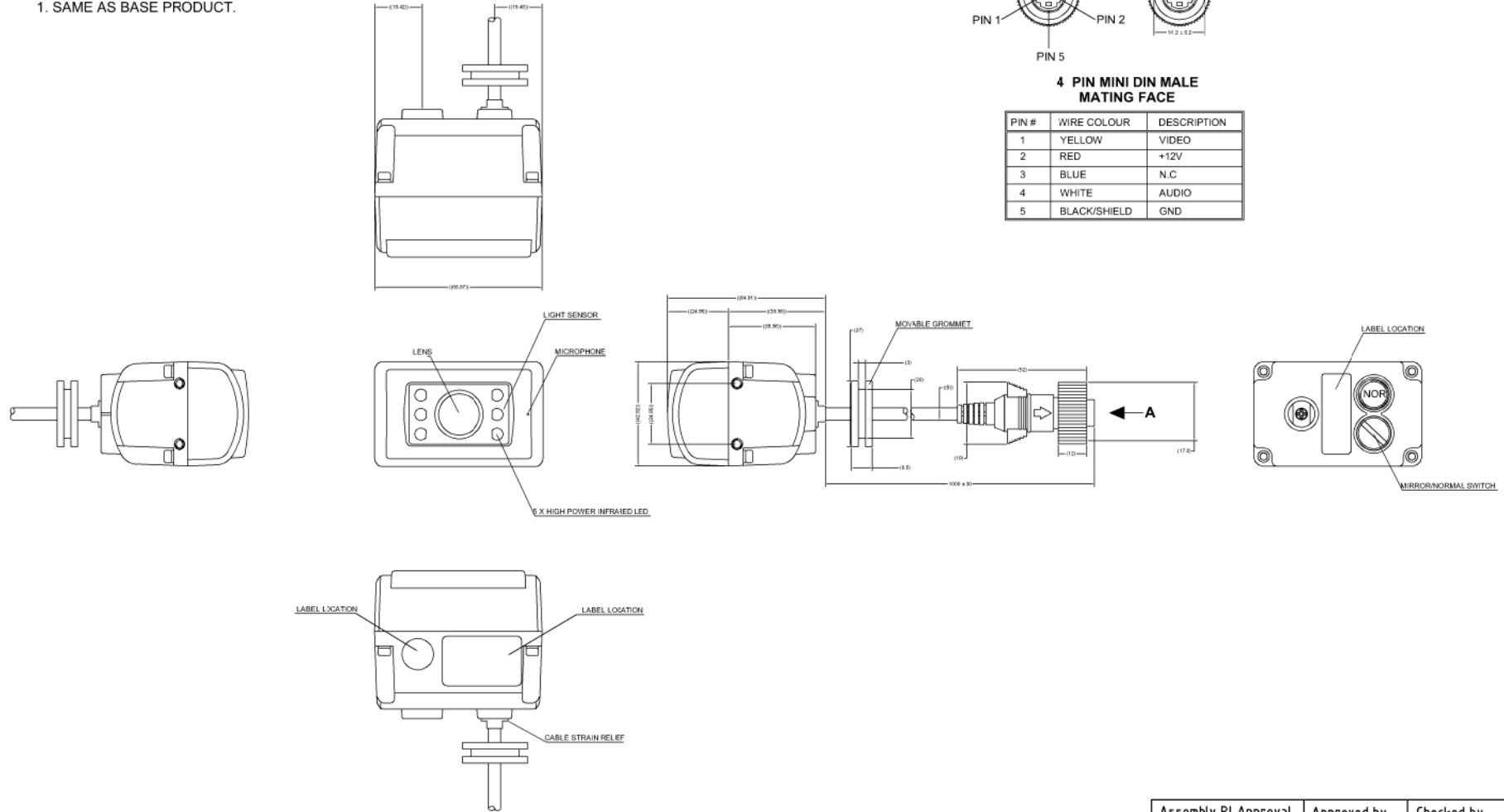
Revision Notes.				
R1 -				
APA: -	Drawn:-	Checked:-	Approved:-	Date: -

VIEW A



4 PIN MINI DIN MALE MATING FACE

PIN #	WIRE COLOUR	DESCRIPTION
1	YELLOW	VIDEO
2	RED	+12V
3	BLUE	N.C
4	WHITE	AUDIO
5	BLACK/SHIELD	GND



- NOTES:
- REFER TO PRODUCT SPECIFICATION FOR MORE DETAILS.
  - FOR PRODUCT LABEL AND PACKAGING INFORMATION REFER TO MASTER BOM.
  - REFER TO TABLE 1 FOR FACTORY INSTALLED FIRMWARE VERSIONS.

PROPRIETARY NOTICE

THIS DESIGN AND TECHNICAL INFORMATION APPEARING ON THIS DRAWING IS THE PROPERTY OF BRIGADE ELECTRONICS, AND IS DISCLOSED IN CONFIDENCE. IT IS NOT TO BE COPIED, REPRODUCED, REVEALED TO OR EXPROPRIATED BY OTHERS, EITHER IN WHOLE OR IN PART WITHOUT THE EXPRESS WRITTEN CONSENT OF BRIGADE ELECTRONICS.

**BRIGADE®**

Assembly PI Approval T. CHOI	Approved by B. CHILDS	Checked by J. TYRRELL	Drawn by A.FOSTER
Angle of Projection 	Units mm	Scale N/A	Released 11/12/19
	Status RELEASED	BE-8XXC-C(NPL)	
	Part No VARIES	BE-004259-00-19	